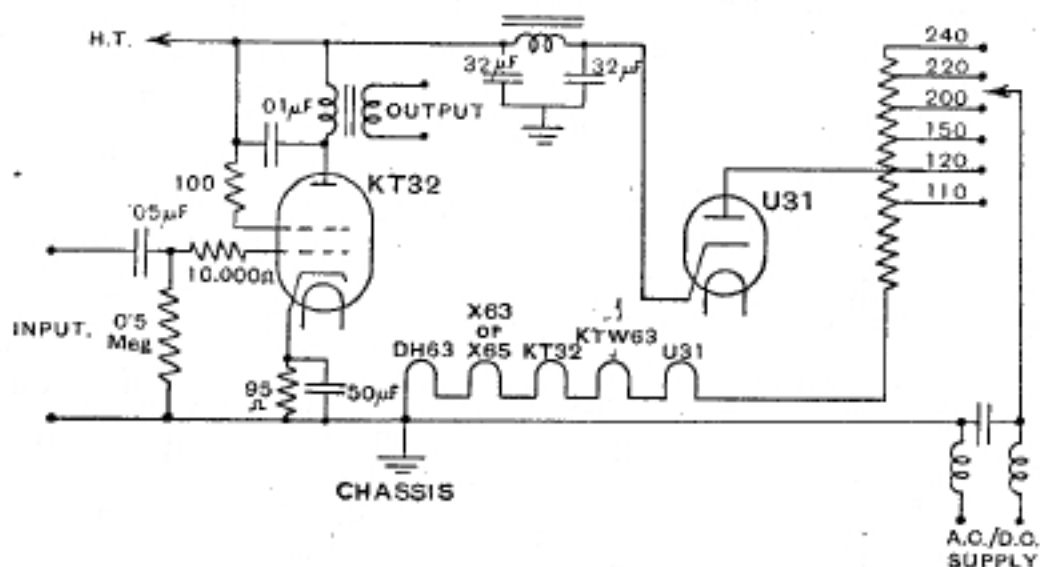


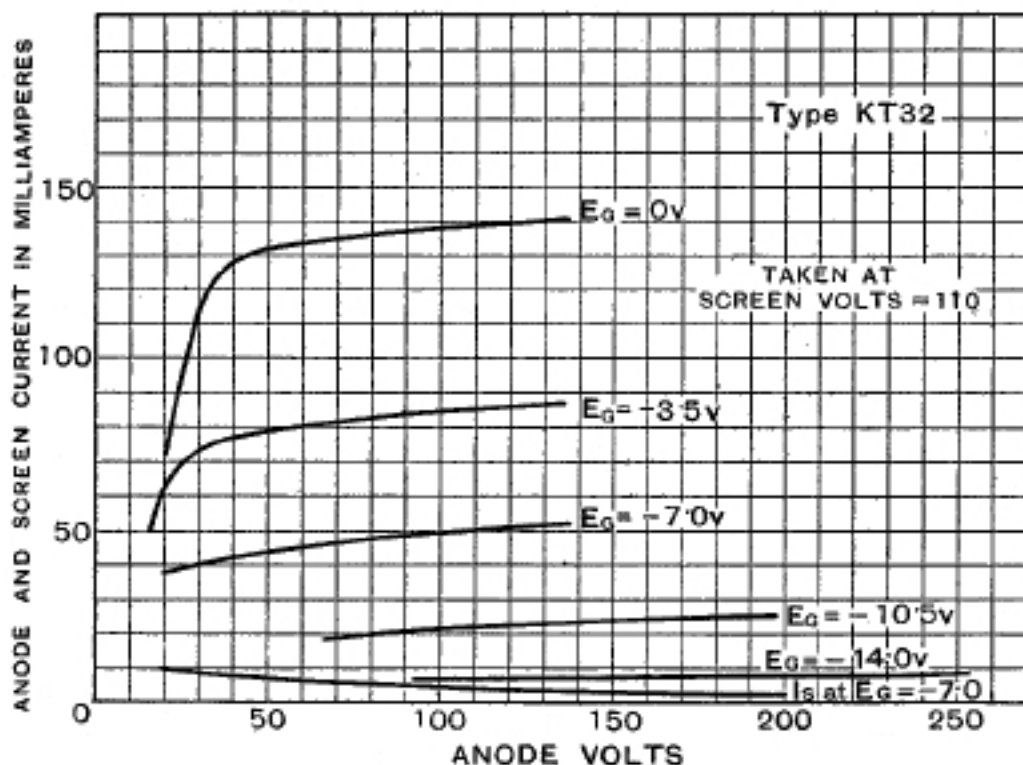
TYPE KT32

OPERATING CONDITIONS (cont.)

To prevent instability a screen stopping resistance of 100 ohms should be used ; a grid stopping resistance of 10,000 ohms or more may be used in addition.



Typical circuit for KT32 output tetrode, showing heater wiring system for DC/AC receiver, suitable for any supply from 100 to 250 volts. If the supply voltage range is 200—250, the U31 anode tap should be taken to 150 volt tapping on resistance shown.



CHARACTERISTIC CURVES OF AVERAGE VALVE.